

Livestock Confinements

From 20 sows to over 20,000 sows . . .



We have the solution for you!

EPS is the Leader when it comes to Livestock Confinement!

*The nation's
largest
integrators
have
chosen EPS!*



Complete line of buildings

- . . . We can solve just about any need
- . . . 100' Clearspan Barns
- . . . Double & Triplewide Barns



Low-cost manufacturer

- . . . Consistent competitive pricing



Complete engineered building package

- . . . Reduce risk and get a better building



Complete proven systems

- . . . Longer life and reduced material costs

"EPS has shown commitment to the livestock industry which has been demonstrated by their customer service approach, diverse product line, and competitive pricing."

—Glen Christensen, President and General Manager, Christensen Construction, Inc.



Proven results!

EPS has been manufacturing pre-engineered buildings for agricultural markets since 1981. Our years of experience manufacturing building systems stands behind each of our livestock buildings. EPS has a network of over 350 independent authorized dealers across the U.S., each one trained and ready to build your project.



Cost Efficiency and Expertise for All of your Building Needs!



Choose from:

TCE = Total Controlled Environment

WW = Air Assist Warm Wall

CW = Air Assist Cold wall

SB = Custom Stick Built Packages

Accessory = Panel Packages

Exclusively manufactured by EPS:

- **Division Wall Packages**
- **Ceiling Packages (including pop-up)**
- **Panelized Walkways**
- **Dura-Doors**
- **Glas-Panel**
- **Roll-formed Steel and Trims**
- **Fibervent Eave Doors**



Breeding
Gestation

Farrowing
Nurseries

Isolation
Finishers



We'll Construct the Right Building for the Exact Stage of Development you Specialize in!

**Christensen Farms
Kossuth Site
51 x 318 Finisher**



**EPS Cold Wall
Finishers**

- Extremely economical
- Quick construction
- Less power requirements
- Easy to construct
- High-quality materials



**New Modern Concepts
Finisher Site**





**Pinedale Farms
81 x 585 Gestation Barn**

**Holden Farms
St. Charles Site
2 Gestation Barns,
1 Finisher Barn 81 x 352**



**Daryl Bartz
Wacoma Site**



**University of
Minnesota
Waseca Site
Gestation Barn
Farrowing and
Insemination
Site**

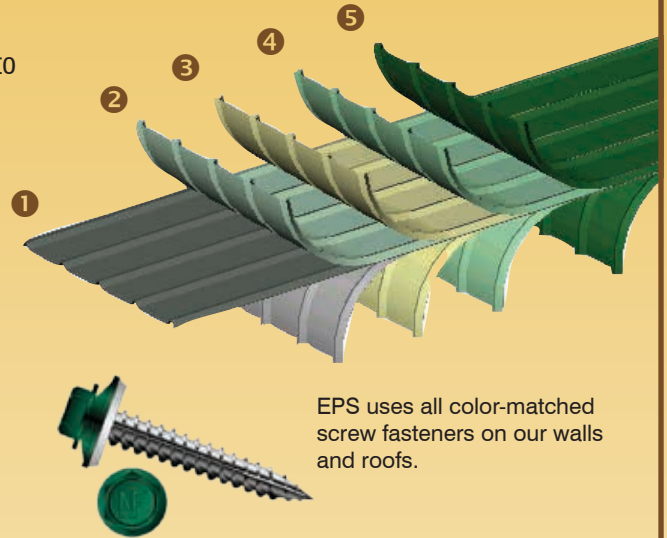


Innovations for Better Confinement Buildings

EPS 29 ga. Steel Layer System

EPS roll forms our own steel. We utilize computer controlled instruments to achieve exact matches of measurements, color and uniformity.

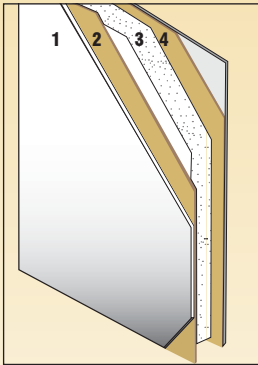
- 1 ASTM A446, Grade "E" full-hard, G-60 galvanized base.
- 2 Zinc coating guards against corrosion.
- 3 Pre-treated film provides superior adhesion of the primer.
- 4 Urethane primer provides additional corrosion protection as well as ensuring permanent bonding of the finish coat.
- 5 Siliconized polyester finish coat adds fade-resistant color and long-lasting protection.



EPS uses all color-matched screw fasteners on our walls and roofs.

Foam Core Wall Panel

1 Glas-Panel Interior—whether a high density plastic (NRP) or fiberglass reinforced plastic (FRP) is chosen, you get superior sanitation and a USDA approved product.



2 Plywood—next to interior and exterior surface provides tremendous strength.

3 Expanded Polystyrene (EPS)—a superior, moisture-resistant insulation material 3-5/8" thick. Does not settle, slump or shrink. R-Value remains constant and does not deteriorate with time.

4 Aluminum Exterior—white stucco-textured aluminum finish with baked on acrylic and bonded to 3/8" plywood. OR—screw fastened steel.

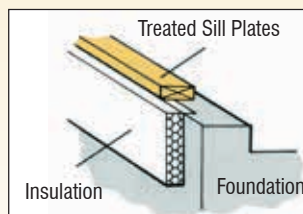
Pop-up Ceiling

EPS buildings are available with our exclusive "pop-up" ceiling system that features non-settling insulation and a maintenance-free high-density polyethylene surface. Other ceiling options are also available.



Perimeter Trim/Insulation

Perimeter insulation or exterior sill trim reduces penetration by rodents and moisture.



Fibervents

EPS fibervents allow 3-1/2 sq. ft. of opening per 12" x 96" eave section. Durable 5/8" plywood with white aluminum skin. Larger opening available.



Dura-Door Insulated Walk Door

EPS's Dura-Door was developed through years of application testing. It will perform where others fail. Dura-door features a laminated white aluminum, or FRP plastic-to-wood finish on both sides of an expanded polystyrene core. The door perimeter is reinforced with wood capped with a heavy vinyl extrusion. The frame exterior is engineered wood with extruded aluminum trim. Stainless steel hardware and lites available.



Dura-Door is available in six standard sizes and custom sizes when requested.

Dura-Door Properties:

- Durable, heavy duty construction
- Heavy duty electroplated yellow zinc hinges and latch, wear resistant, sag resistant
- Optional stainless steel hardware available
- Pre-hung for fast installation
- Easily cleaned by chemical or steam
- USDA accepted finishes
- Moisture resistant
- Complete weather stripping, tight and draft free
- Vinyl extruded door plug capping, chip and split resistant
- Laminated door slab, rigid, warp resistant
- EPS insulated core, non CFC containing, R-5 condensation control
- 10" x 10" or 20" x 24" Lite available
- Stainless steel deadbolt available



We're Your One Source



EPS: Graettinger Iowa Plant

- ✓ **Engineering**
- ✓ **Drawings**
- ✓ **Materials**
- ✓ **Expertise**

Since 1981—Simply Better Buildings!

- Structural insulated panel, (Solid Core) buildings feature foam core wall panels and wood truss systems for agricultural, commercial and industrial buildings.
- Post frame packages for commercial and agricultural use
- Commercial industrial building packages and panelized products
- Complete dairy facilities
- Equestrian arenas and complete stable packages
- Steel frame building packages can utilize Energy-Lok steel faced EPS SIPs
- Insulated panels for both new construction and retrofit projects
- Cold storage panel systems and walk-in freezers
- Small exterior cooler and freezer building packages
- Residential buildings with an emphasis on ENERGY STAR® qualification



epsbuildings.com

Energy Panel Structures

603 N. Van Gordan Ave., Graettinger, IA 51342

BBL Construction
Perryville, MO

Fingerlakes Construction
Clyde, NY

Phone: 712-859-3219

100% Employee Owned—100% Committed to Quality

INDEPENDENT AUTHORIZED DEALER:

